

# Laundry & Dishwasher Catalogue 2023



# Wash, Dry, and Go

Washer cum dryer is the innovative hybrid solution for modern household, especially for the space constraint apartments. Thanks to a perfect blend of Washing Machine and Dryer serving dual functions in a single appliance, save on floor space and enjoy greater convenience to simplify laundry day.

## Quietly Powerful, Efficiently Effective



### Inverter Motor

Run quieter, smoother and more energy-efficient operation by reducing friction to provide precise control over the motor's speed.



### Reverse Tumbling Action

Periodically changes drum direction, allowing clothes to move around freely without tangling. Clothes dry evenly and with minimal damage.



## Versatile Washing and Drying Programs

Enjoy the freedom of choice with 15 meticulously curated programmes, catering to all your laundry needs. From the efficient Cotton Wash & Dry and Quick Wash & Dry options to the specialized Duvet, Wool & Silk, and Allergy Safe programmes, you'll find the perfect setting for every fabric and garment type.

## Efficient Inverter Motor

Experience silent and energy-efficient laundry sessions with the Inverter Motor, ensuring smooth and reliable performance while reducing noise levels to a minimum. Say goodbye to disruptions and hello to peaceful laundry days.

## User-Friendly LED Display

Navigate through programmes and settings effortlessly with the LED display, offering clear and intuitive control for a seamless laundry experience.

## Dry Level Selection

Customize your drying preferences with Dry Level Selection, allowing you to choose the desired level of dryness for your clothes, ensuring perfectly dried garments every time.

## Flexible Spin Speed, Temperature Selections

Adapt to different fabric requirements with Spin Speed and Temperature Selection, enabling you to adjust the settings for optimal washing and drying results.

## Sensor and Time Dry Options

With Sensor and Time Dry Options, you have complete control over the drying process. Opt for sensor-based drying, where the machine automatically stops when your clothes are dry, or select a specific time for drying tailored to your preferences.

## Time Delay Option

Take charge of your laundry schedule with the Time Delay Option. Set the washer cum dryer to start a cycle at a time convenient for you, whether it's an hour or up to 23 hours later.

## Remaining Time Display

Stay informed about the progress of your laundry with the Remaining Time Display, so you can plan your day effectively and never be caught off guard.

## Automatic Water Adjustment System

Our intelligent Automatic Water Adjustment System optimizes water usage based on your load size, ensuring efficient performance and water conservation.

## Half Load Detection System

No more waiting for a full load – the Half Load Detection System adjusts water and energy consumption for smaller loads, offering unmatched flexibility and efficiency.

## Child Lock Function

Keep your settings safe and your little ones secure with the Child Lock function, preventing any accidental changes during a cycle.



# Efficient. Compact. Powerful.

Designed to handle your everyday laundry needs with ease, this compact powerhouse brings convenience and reliability right to your fingertips. Say goodbye to laundry hassles and embrace a seamless washing experience like never before.

Let's dive into a world of clean, fresh, and effortlessly laundered clothes with our exceptional 7kg Washing Machine!



**EWD 86141 VT**  
8/6kg Washer Dryer, 1400rpm  
W597 x D582 x H845mm  
**RCP: \$1,099**

**10**  
YEARS  
WARRANTY  
MOTOR



## Features

- 15 Programmes : Cotton Wash & Dry, Quick Wash & Dry, Cotton Dry, Gentle Dry, Cotton 20, Cotton, Eco 40-60, Fast 60', Rapid 15', Spin/Drain, Allergy Safe, Rinse, Duvet, Wool & Silk, Synthetics
- Inverter Motor
- LED Display
- Dry Level Selection
- Sensor and Time Dry Options
- Spin Speed Selection
- Temperature Selection
- Time Delay Option (1 – 23hrs)
- Remaining Time Display
- Automatic Water Adjustment System
- Half Load Detection System
- Child Lock Function

## Performance

- Water efficiency: √ √ √
- WELS registration no.: WM-2022/037213
- Water consumption: 7.90L/kg
- Energy consumption: 1.23kWh/cycle
- Power connection: 2200W
- Voltage/Frequency: 220-240V / 50Hz



**EWF 1075 VT**  
7kg Washer, 1000rpm  
W597 x D527 x H845mm  
**RCP: \$599**



## Features

- 15 Programmes : Cotton 90, Cotton, Cotton 60, Cotton 40, Eco 20, Easy Care, Wool, Rinse, Spin, Hand Wash Delicate, Sport, Mix, Shirts, Daily 60', Rapid 15'
- Spin Speed Selection
- Temperature Selection
- Prewash, Extra Rinse Options
- Time Delay Option (3, 6, 9, 12 hrs)
- Programme Follower : Wash, Rinse, Spin
- Automatic Water Adjustment System
- Half Load Detection System
- Child Lock Function

## Performance

- Water efficiency: √ √ √
- WELS registration no.: WM-2015/017678
- Water consumption: 7.74L/kg
- Energy consumption: 1.06kWh/cycle
- Power connection: 2200W
- Voltage/Frequency: 220-240V / 50Hz

# Most Energy Efficient

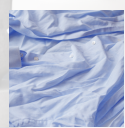
With 5 Ticks Energy Efficiency, heat pump technology requires much less energy to operate, which can result in significant cost savings over time. Heat pump dryers are also gentler on clothes as they use lower temperatures to dry clothes, reducing the risk of damage or shrinkage.

## Efficient Cleaning, Effortless Performance



### Automatic Sensor Drying

Detects the level of moisture in the clothes and adjusts the drying time accordingly.



### Anti-Crease Function

Reduces the appearance of wrinkles in clothes after drying. Save time, effort and reduce ironing. Useful for silk or linen clothes.

**5** Ticks  
ENERGY  
EFFICIENCY

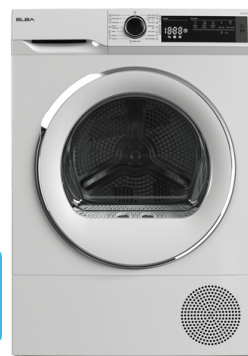


### EBD 981H VT

9kg Heat Pump Dryer  
W596 x D609 x H845~855mm

**RCP: \$1,499**

**10**  
YEARS  
MOTOR  
WARRANTY



### EBD 882H VT

8kg Heat Pump Dryer  
W596 x D563 x H845~855mm

**RCP: \$1,299**

**10**  
YEARS  
MOTOR  
WARRANTY



## Features

- 15 drying programs : Cottons: Extra Dry, Cupboard Dry, Iron Dry. Synthetics: Cupboard Dry, Iron Dry. Delicate, Time Drying, Baby Care, Duvet, Extra Silent, Mix, Wool Refresh, Refresh, Express 45', Shirts 30'
- Electronic programmes indicator
- Time delay (1 - 23 hrs)
- Automatic sensor drying
- Drying level selection, Delicate drying option
- Auto Anti-Crease, Buzzer Mute Functions
- Reverse Tumbling Action
- Water tank, Lint filter, and Heat exchanger cleaning warning indicators
- Large door for easy loading/unloading
- Stainless Steel Drum, LED Drum Light
- Child Lock

## Performance

- Energy Efficiency : A+++
- NEA Rating : √√√√
- NEA Registration No. : MELS-CAS-CD220015
- Voltage/Frequency : 220-240V / 50Hz

## Features

- 15 drying programs : Cotton: Extra Dry, Cupboard Dry, Iron Dry. Synthetics: Cupboard Dry, Iron Dry. Delicate, Time Drying, Baby Care, Duvet, Sport, Mix, Wool Refresh, Refresh, Express 34', Shirts 20'
- Electronic programmes indicator
- Time delay (1 - 23 hrs)
- Automatic sensor drying
- Drying level selection, Delicate drying option
- Auto Anti-Crease, Buzzer Mute Functions
- Reverse Tumbling Action
- Water tank, Lint filter, and Heat exchanger cleaning warning indicators
- Large door for easy loading/unloading
- Stainless Steel Drum, LED Drum Light
- Child Lock

## Performance

- Energy Efficiency : A++
- NEA Rating : √√√√
- NEA Registration No. : MELS-CAS-CD220014
- Voltage/Frequency : 220-240V / 50Hz



# Achieve More, in Less Time

Air vent dryer can dry clothes faster as the hot, humid air is expelled from the dryer and replaced with fresh, dry air. This allows for higher productivity and efficient drying time while reducing the risk of over-drying or damaging your clothes.



## EBD 781H VT

7kg Heat Pump Dryer  
W596 x D525 x H845~855mm  
**RCP: \$1,099**

**10**  
YEARS  
MOTOR  
WARRANTY



### Features

- 15 drying programs : Cotton: Extra Dry, Cupboard Dry, Iron Dry. Synthetics: Cupboard Dry, Iron Dry. Delicate, Time Drying, Baby Care, Jeans, Sport, Mix, Wool Refresh, Refresh, Express 34', Shirts 20'
- Electronic programmes indicator
- Time delay (1 - 23 hrs)
- Automatic sensor drying
- Drying level selection, Delicate drying option
- Auto Anti-Crease, Buzzer Mute Functions
- Reverse Tumbling Action
- Water tank, Lint filter, and Heat exchanger cleaning warning indicator
- Large door for easy loading/unloading
- Stainless Steel Drum, LED Drum Light
- Child Lock

### Performance

- Energy Efficiency : A+
- NEA Rating : √√√
- NEA Registration No. : MELS-CAS-CD220013
- Voltage/Frequency : 220-240V / 50Hz



## EBD 750 V

7kg Air Vented Dryer  
W597 x D568 x H856mm  
**RCP: \$759**



### Features

- 15 drying programs : Cotton: Extra Dry, Cupboard Dry, Iron Dry, Eco. Synthetics: Cupboard Dry, Iron Dry, Time Drying, Hygiene+, Jeans, Outdoor/Sport, Mix/Daily, Freshen Up, Xpress Super Short, GentleCare/Shirts
- Programmes Indicator
- Time delay: 3,6,9 hours
- Automatic sensor drying
- Auto Anti-Crease, Buzzer Mute Functions
- Reverse Tumbling Action
- Lint Filter Cleaning Indicator
- Large door for easy loading/unloading
- Galvanized Drum, Drum Light
- Child Lock

### Performance

- Energy Efficiency : C
- NEA Rating : √
- NEA Registration No. : MELS-CAS-CD220009
- Voltage/Frequency : 220-240V / 50Hz

# Big on Convenience, Small on Space

A tabletop dishwasher is perfect for any apartment thanks to its compact, space saving size. Spacious interior fits up to 6 place settings, ideal for couples and small household.

**Effortlessly clean, sparkling results every time**



## Customized Cleaning for Every Dish

With 8 wash programs, choose the cycle to match your daily needs. Advanced filtration system ensures dishes come out clean every time.



## Conserve Water and Energy

ELBA tabletop dishwasher uses only 1.2litres per place setting, whereas handwashing typically uses whopping 30~40 litres of water per cycle.



## EBDW 0680M WH

Tabletop Dishwasher

W550 x D500 x H438mm

**RCP: \$699**



## Features

- Place Settings : 6
- 8 Programs: Intensive, Normal, ECO, Glass, 90min, Rapid, Fruit, Self-cleaning
- 3 Functions: Express, Extra drying, Extra cleaning
- LED touch control
- Spray arms: Lower
- Delay Start (1-24 Hours)
- Child Lock

## Performance

- Water Efficiency : √√
- Water Consumption : 1.2litres/place setting
- WELS Registration No. : DW-2021/032575/SET
- Energy efficiency class : A+
- Energy Consumption : 174 kWh/annum
- Voltage/Frequency : 220-240V/50Hz
- Power Connection : 1170-1380 W





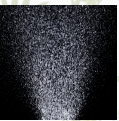
# Let Your Dishwasher Do the Dirty Work.

Say goodbye to scrubbing pots and pans by hand, and hello to sparkling clean dishes with just the push of a button. Our dishwashers are designed to take the hassle out of your daily routine, saving you time and energy. Invest in the ultimate cleaning companion today.



## Top 2 Best Water Efficiency in Singapore

Boasting excellent water efficiency of 0.60litres/place setting, ELBA Dishwasher EBDW 1481M WH is the superior choice.



## Innowash 360° Water Spray System

Revolutionary 360° coverage to reach every nook and cranny of your dishes; thoroughly washing them for spotless, sparkling results.



## Infinity Plus Cutlery Drawer

Designed to house cutlery, provide a comprehensive clean, and ensure even tough stains and grease are removed with ease.



### EBDW 1352 AWH

60cm Free Standing Dishwasher  
W598 x D614 x H850 (+15) mm

**RCP: \$799**



#### Features

- Place Settings : 14
- 5 Wash Programmes: Intensive 70°C, Daily 65°C, Normal 60°C, Eco 50°C, Mini 35°C
- Half Load Function
- Removable Cutlery Drawer
- Adjustable Upper Basket
- Natural Drying
- On-Off / Program Selection knob
- Program Indicators
- Rinse Aid Indicator
- Salt Indicator
- Tablet detergent indicator
- Delay Start (3, 6, 9 Hours)
- Child Lock

#### Performance

- Water Efficiency : √ √ √
- Water Consumption : 0.80litres/place setting
- WELS Registration No. : DW-2023/040403/SLS
- Energy Consumption : 0.93kWh/cycle
- Voltage/Frequency : 220-240V/50Hz
- Power Connection : 1800-2100 W



### EBDW 1481M WH

60cm Free Standing Dishwasher  
W598 x D610 x H845mm

**RCP: \$899**



#### Features

- Place Settings : 14
- 8 Wash Programmes: Intensive, Eco, Normal, Auto, 90Min, Glass, Rapid, Soak
- LED Display
- Half Load Function
- Innowash 360° Water Spray System
- Infinity Plus Cutlery Drawer
- Adjustable Upper Basket
- Static Drying
- Extra Drying Function
- Program Indicators
- Rinse Aid Indicator
- Salt Indicator
- Delay Start (1-24 Hours)
- Child Lock

#### Performance

- Water Efficiency : √ √ √ √
- Water Consumption : 0.60litres/place setting
- WELS Registration No. : DW-2020/030322/SET
- Energy Consumption : 266kWh/annum
- Voltage/Frequency : 220-240V/50Hz
- Power Connection : 1760-2100W

# ELBA



 ELBA Home Appliances  
 @elbahomeappliances



CASA (S) PTE LTD  
15 Kian Teck Crescent, Singapore 628884  
Tel: 6268 0066 | [elba@casa.com.sg](mailto:elba@casa.com.sg)  
[www.casa.sg](http://www.casa.sg) | [www.elba.sg](http://www.elba.sg)